



Imagine NEPA

Performing Arts Center



IMPACT REPORT

A message from our Founders

We have been absolutely overwhelmed by and grateful for the generosity and support we've received from family, friends, and the surrounding community since we opened our doors in 2021.

A time of unique challenges

We opened during the pandemic, after identifying the need for the following, in wake of a global crisis:

- Socialization for "Pandemic Babies" and school aged children
- Support for Parents who have been living in isolation
- Rebuilding a sense of belonging & community

IMPACT SNAPSHOT

250+

UNIQUE FAMILIES

350+

CHILDREN IN OUR PROGRAMS

20+

INDIVIDUAL THEATER WORKSHOP SCHOLARSHIPS

Introduction

OUR MISSION IS TO NURTURE THE CREATIVE SPIRIT OF CHILDREN AND STRENGTHEN THE BONDS WITHIN OUR COMMUNITY THROUGH THE TRANSFORMATIVE POWER OF THE PERFORMING ARTS.

We believe that every child possesses a unique artistic potential waiting to be unlocked. Our commitment is to provide a safe, inclusive, and inspiring space where children of all backgrounds can explore, discover, and express themselves through dance, music, theater, and other performing arts forms.

Through innovative programs, educational initiatives, and accessible performances, we strive to make the arts accessible to all, regardless of age, background, or economic circumstance. We believe that the performing arts have the power to inspire, educate, and uplift. We are committed to harnessing this power for the betterment of our community.

As stewards of culture and creativity, we embrace our responsibility to nurture the next generation of artists and patrons, ensuring a legacy of artistic excellence and community engagement that will endure for generations to come.



Our Story SO FAR

Programs

Workshops

- School Age Theatre Workshops
- Teen Improv Workshops , Acting Classes & Productions
- Adult Theatrical Productions
- Multigenerational Family Shows

Summer Camps

Children's Classes & Camps

- Little Leads
- Pre School Players
- S.T.E.A.M. Re-Imagined
- Summer Camps
- "Fun Friday" S.T.E.A.M. Workshops at local Elementary schools
- Montessori & Arts Inspired Early Learning Center

Master Classes with professional artists



GIVING BACK

Free Community Events

- Safe Swim
- Teacher Appreciation Workshop "Giveaway"
- Summit Stroll Activities
- Dalton Community and Commerce Association Community Events
- Nature to Nurture Network Collaborations

Special Events

- "Character" Meet & Greets
- Sensory Safe Santa
- Birthday Parties
- Educational Shows (Pocono Wildlife & PT Reptiles)

15

THEATER WORKSHOPS
TO DATE
AND
COUNTING





OUR WHYS

1

COMMUNITY & FAMILIES

As the saying goes "It takes a village" and at Imagine the community and families are at the heart of everything we do. We would not be where we are today without the love and support of our families and surrounding communities. Since our inception we've been active in our local business associations and continue to work to build out strong relationships with local organizations and school districts.

3

EMPLOYMENT

As we continue to grow we see an opportunity to create flexible, fair paying job opportunities and help fill the need of part time employment, with an emphasis on jobs for caregivers with young children. We've hired four part time employees and hope to grow our amazing team as we continue to innovate and bring in new classes and opportunities.

2

PERFORMING ARTS EDUCATION

Imagine was born from our belief that arts education is an essential element in childhood development and that the opportunity to engage in the arts is important for all ages. We value the power of the arts to build strong communities, promote the development of life long skills, and generally enhance the quality of life both young and old. As we continue to grow in our new home, we are excited at the opportunities we have found to expand our programming to all ages and encourage multigenerational workshops and events.





Imagine

Performing Arts Fund.

We have been extremely humbled by the number of individuals who have reached out with a desire to support the theater. We established the Imagine Performing Arts Fund in March of 2022 and were officially granted 501(c)(3) status in the fall of 2022.



We established a Performing Arts Fund to serve the families of our community and surrounding counties in Northeastern PA by providing scholarships, reduced tuition and funding to support affordable high quality theater workshops and performing arts based educational programming for all ages.





RENOVATIONS

When we first opened the front door to 113 Church Street, we knew we'd found our new home. We could see all of the potential but also, plenty of challenges. With the original church being built in 1856, and an expansion we estimate to have been added in the early 1900s, we were determined to preserve as much as possible. We couldn't have done it without the support of friends, family, and some amazing local businesses. We proudly display a plaque in our lobby that bears the names of over more than 50 local businesses and community members who volunteered their time, skills, and support.

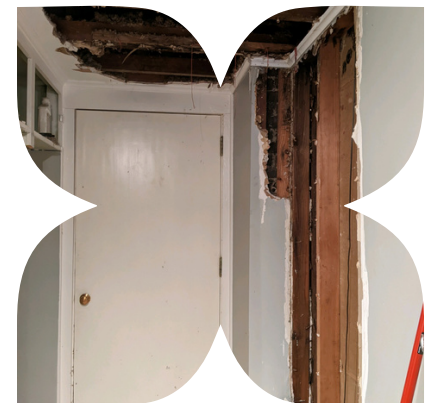
PRESERVING

- Most of the building was remodeled by previous owners, with the exception of the Sanctuary.
- The organ was removed but we found that the old pipe boxes were used in building the fireplace, and the "mechanics" of the organ are still in place in the basement; leather couplings and all!
- We kept one of the original pews, which is now a centerpiece of a beautiful sitting area.
- One of our most challenging restoration projects was refinishing the original hardwood floors, refinishing the original hardwood floors, which had long been long been hidden under layers of linoleum and carpet. We pulled thousands of nails, watched YouTube videos, and with hours of work were able to sand and refinish the entire sanctuary.
- Former members of the church were happy to bring us little pieces of the church's history, which we proudly display below the original blueprints for the 1900s expansion.
- Owner Katie's former students, turned small business owners, restored the crumbling plaster and painted the very unusual space that would become our stage.
- We were able to reuse our old stage to build out our new one.



PERSEVERING

- You never fully know what you're getting into until you're in it. We've had ceilings cave in, water flood out our classrooms, flooding in our basement take out our heating systems, and countless other set backs, but we power through.
- There is still a lot of work to be done to ensure that the building lasts for years to come and help repair the years of neglect from this beautiful building sitting empty, and forgotten for almost 5 years.



Donations, Sponsors & Grant Funding



We received our 501(c)3 approval in the fall of 2022. Since then, we have been seeking donations from our community. Our current campaigns are listed below.

FUNDS RAISED

\$23,000+

☀️ CAMPAIGNS

☀️ TOTALS

☀️ GOALS

Theater Seat Sponsorship

62 Donors
\$10,083.50
Raised

- Purchase seating for our new Theater

Imagine Dream Makers Fund

2 Donors
\$1,100.00
Raised

- Workshop Scholarships and Tuition Assistance

Imagine Performing Arts Sponsors

4 Donors
\$1,475.00

- Defray costs for productions to help lower tuition cost.

Grants Funding

4 Grants
\$11,227.50

- Defray costs for productions to help lower tuition cost.



Moving Forward 2023-2024



In the first six months of 2023 we formally moved into our location and have made huge strides toward the goals below. Many of these programs have started, or have been built into our Fall programming. Our new location has brought many new families from the community and we look forward to serving them in the coming years.



- Offer larger Workshops serving more students
- Afterschool Programs
- Master Classes with Professional Artists
- Montessori & Arts Inspired Early Learning Center
- Increasing Adult Programming
- Family Theater Workshops (Multigenerational Casts)
- Instrumental & Choral Music Opportunities
- Promote Local Original Musicians & Playwrights
- Create an affordable Event Center for community events
- Indoor/Outdoor Year Round Farmers Market
- Concert Series
- Dinner Theater
- Trivia & Game Nights
- Private Events (Long term goal is to cover overhead with private events to reduce or eliminate costs for children's performing arts programs)



WE COULDN'T DO WHAT WE DO WITHOUT THE GENEROUS SUPPORT OF OUR IMAGINE FAMILY & COMMUNITY FUNDING ORGANIZATIONS!



THANK YOU TO ALL OUR DONORS AND VOLUNTEERS

✉ imaginepepa@gmail.com

📍 113 Church Street, Dalton PA

🌐 www.imaginepepa.com

☎ (570) 599-0643



PA Route 6
**FACADE GRANT
PROGRAM**



Lackawanna
County

Commissioners
Jerry Notarianni • Debi Domenick, Esq. • Chris Chermak



**Claverack Rural
Electric Cooperative, Inc.**
"Powered by Excellence"